



SHVS
Service Bakery



ETL Listed
40427



ETL Sanitation
40427

These merchandisers are manufactured to meet ANSI/National Sanitation Foundation Standard #7 requirements.

We reserve the right to change or revise specifications and product design in connection with any feature of our products. Such changes do not entitle the buyer to corresponding changes, improvements, additions or replacements for equipment previously sold or shipped.

REFRIGERATION DATA

Note: This data is based on store temperature and humidity that does not exceed 75F and 55% R.H.

Discharge Air (F) 30
Evaporator (F) 22

Note: Not recommended to control temp by regulating coil temp allow t-stat to cycle and control temp.

Btu/hr/ft*

Parallel 565

Conventional 650

*For all refrigeration equipment other than Hussmann, use conventional Btu values.

DEFROST DATA

Frequency Hrs 8

OFFTIME

Temp Term °F 54

Failsafe Minutes 36

ELECTRIC or GAS Not Recommended

PHYSICAL DATA

Merchandiser Drip Pipe (in.) 1 1/2

Merchandiser Liquid Line (in.) 3/8*

Merchandiser Suction Line (in.) 5/8*

Estimated Charge (lb)***

4ft 1.2

5ft 1.5

6ft 1.8

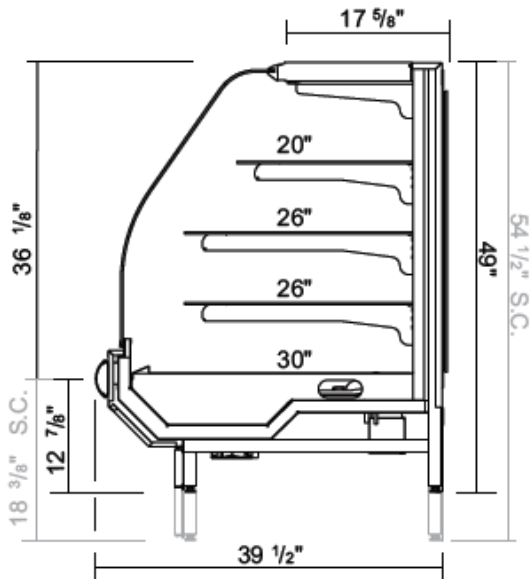
*Dependent on case length and refrigerant type.

*** This is an average for all refrigerants types. Actual refrigerant charge may vary by approximately half a pound.

GLYCOL REQUIREMENTS

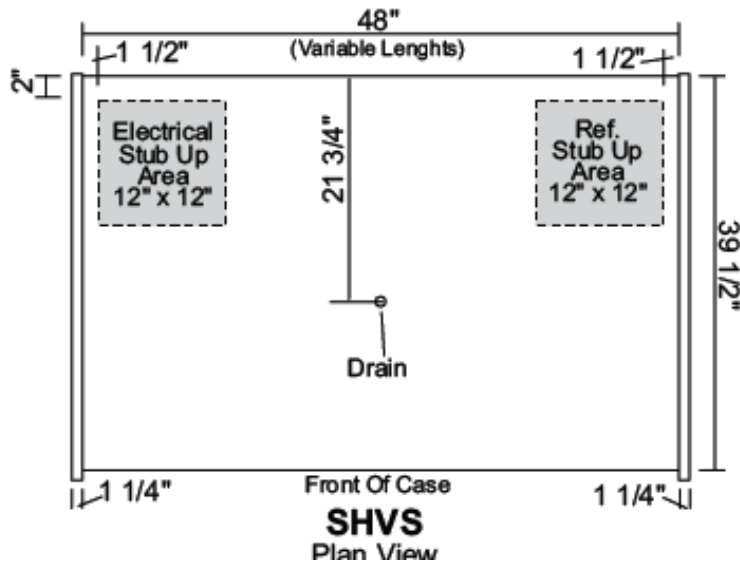
	GPM	PSI
4ft	0.8	2.3
5ft	1.0	3.3
6ft	1.2	5.2

**Engineering
CROSS SECTION**



SHVS
Summit High Volume Service Bakery Case
(Non-Refrigerated and Refrigerated)

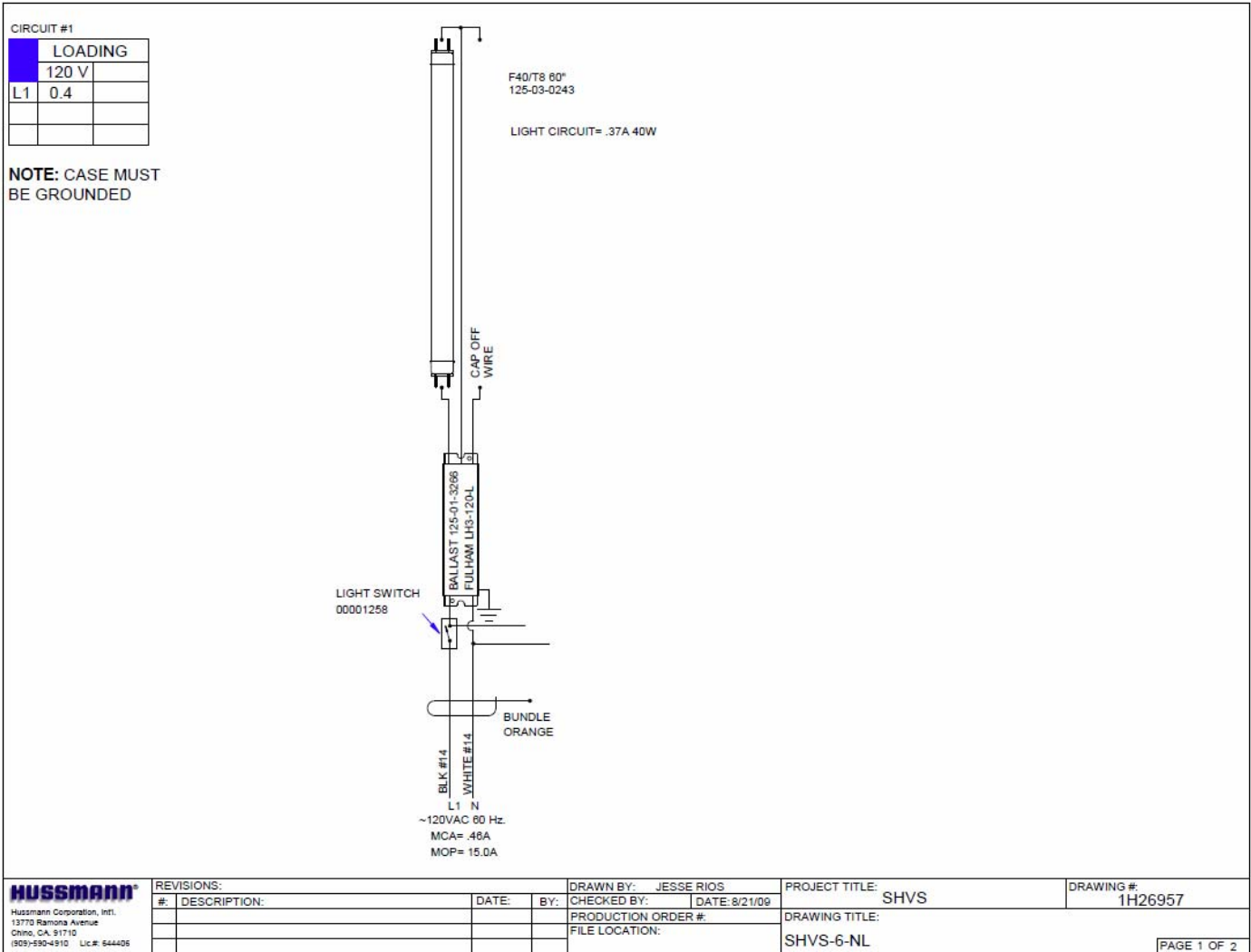
**Engineering
Plan View**



SHVS
Plan View

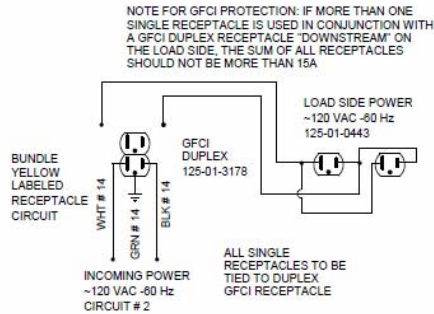
Rev C

SHVS	SHVS-6-NL	6'	1H26957
	SHVS-6-SCHM	6'	1H26958
	SHVS-8-RLM w Novar Control	8'	1H18057
	SHVS-8-RLM w Danfoss EKC202D Control	8'	1H18058
	SHVS-8-SC	8'	1H26575

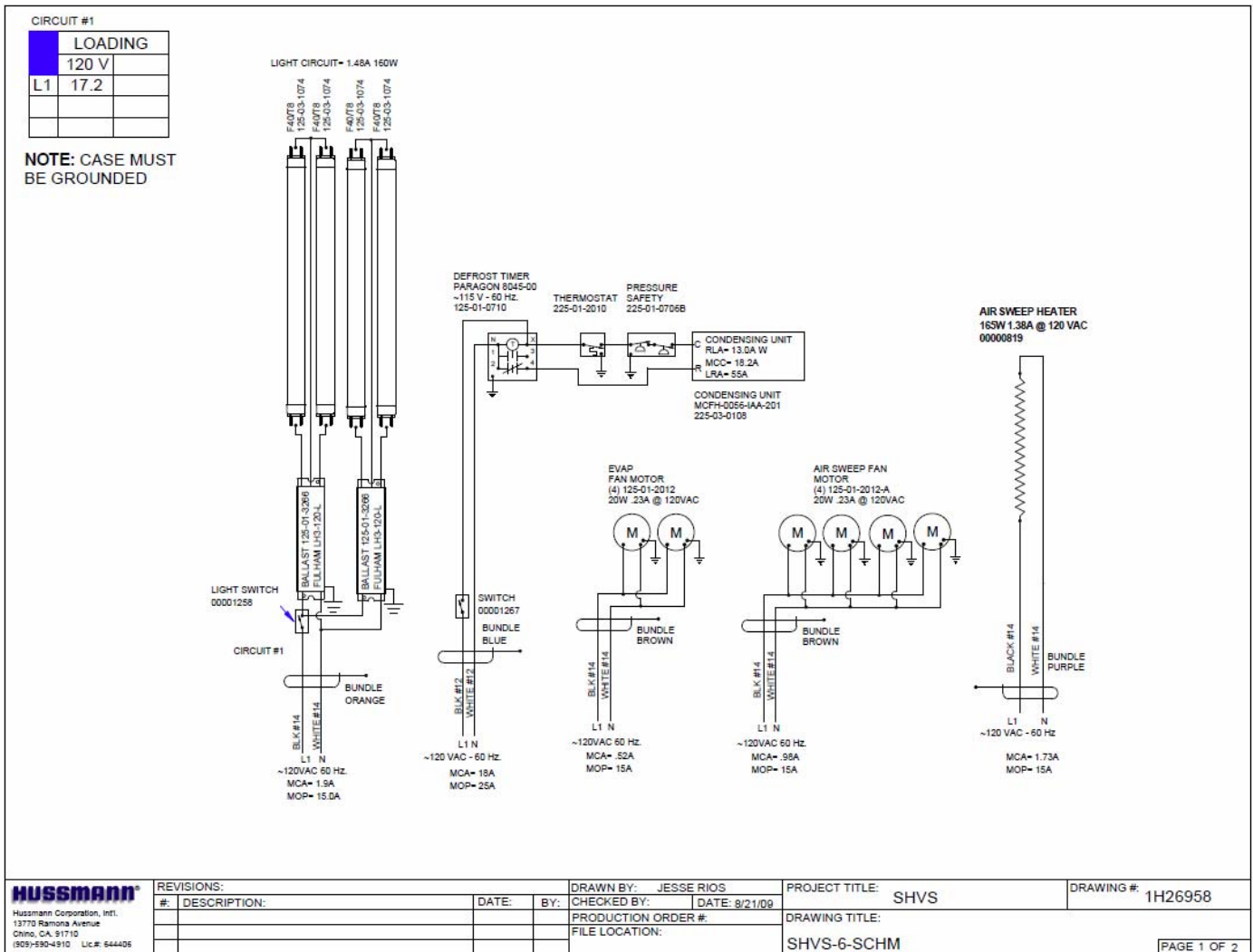


CIRCUIT #2	
LOADING	
120 V	
L1	15.0

NOTE: CASE MUST BE GROUNDED



HUSSMANN® Hussmann Corporation, Intl. 13770 Ramona Avenue Chino, CA 91710 (909) 590-4910 LC# 644406	REVISIONS:			DRAWN BY: JESSE RIOS CHECKED BY: DATE: 8/21/09	PROJECT TITLE: SHVS	DRAWING #: 1H26957
	#:	DESCRIPTION:	DATE:	BY:	PRODUCTION ORDER #: FILE LOCATION:	DRAWING TITLE: SHVS-6-NL
						PAGE 2 OF 2



HUSSMANN®
 Hussmann Corporation, Intl.
 13770 Ramona Avenue
 Chino, CA 91710
 (909) 590-4910 Lic# 644406

REVISIONS:		DATE:	BY:
#:	DESCRIPTION:		

DRAWN BY:	JESSE RIOS
CHECKED BY:	
DATE:	9/21/09
PRODUCTION ORDER #:	
FILE LOCATION:	

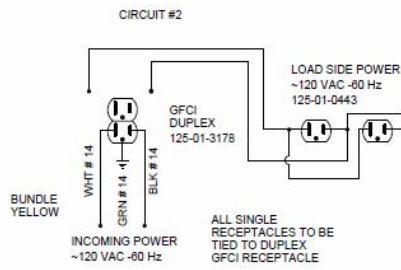
PROJECT TITLE:	SHVS
DRAWING TITLE:	SHVS-6-SCHM

DRAWING #:	1H26958
PAGE 1 OF 2	

CIRCUIT #2

LOADING	
	120 V
L1	15.0

NOTE: CASE MUST BE GROUNDED



HUSSMANN®
Hussmann Corporation, Intl.
13770 Ramona Avenue
Chino, CA 91710
(909) 590-4910 Lic.# 644406

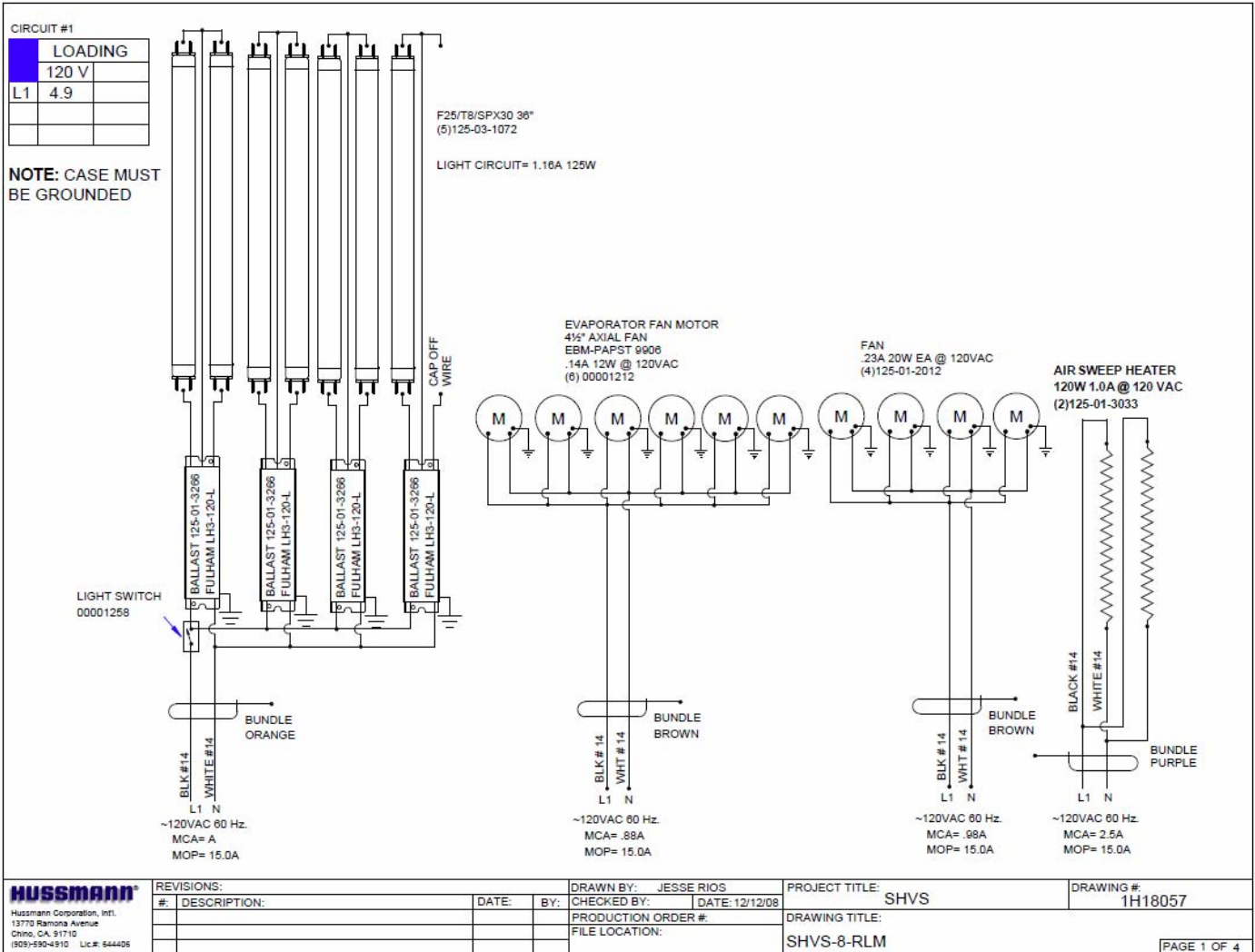
REVISIONS:

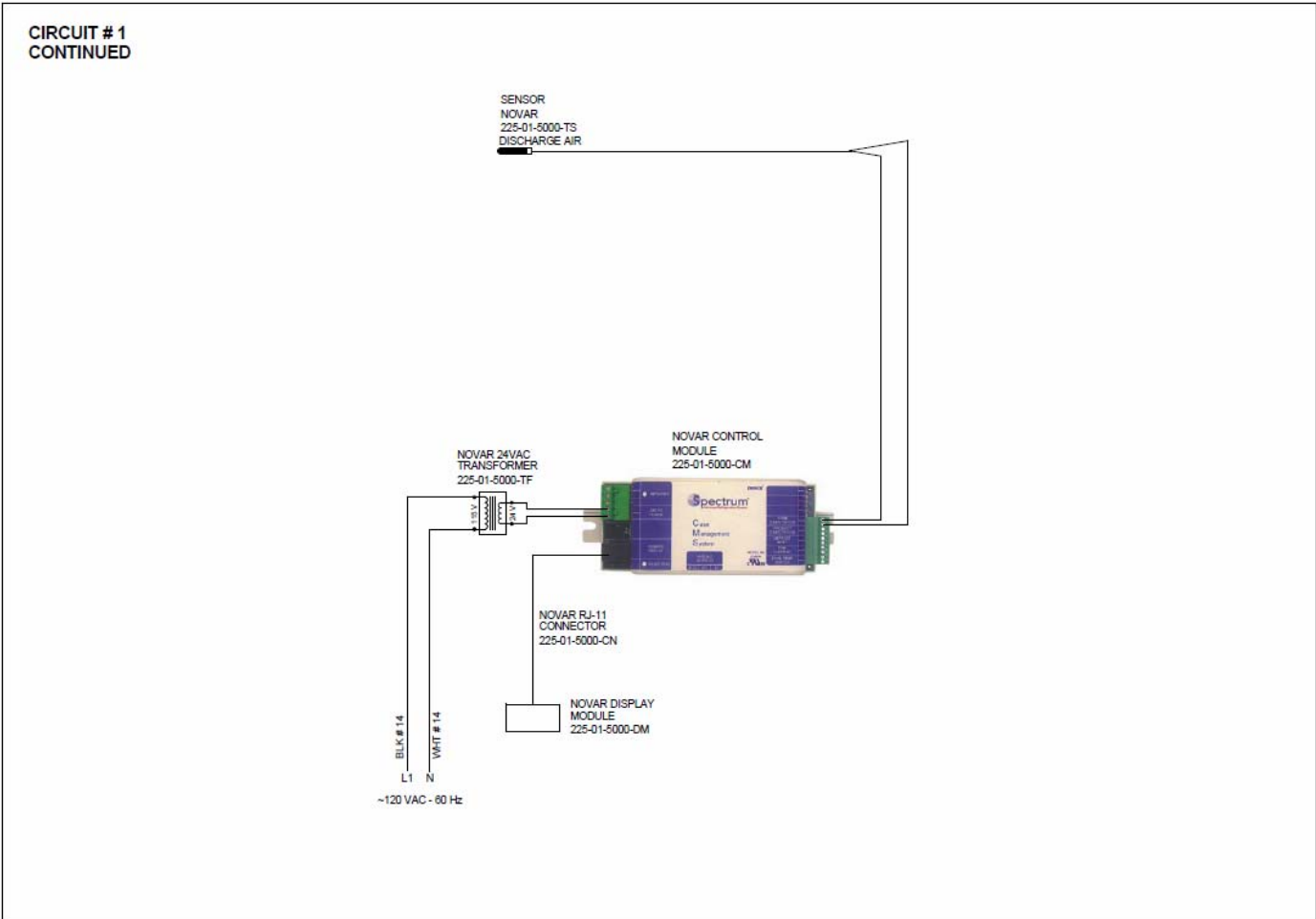
#	DESCRIPTION:	DATE:	BY:

DRAWN BY: JESSE RIOS
CHECKED BY: DATE: 8/21/09
PRODUCTION ORDER #:
FILE LOCATION:

PROJECT TITLE: SHVS
DRAWING TITLE: SHVS-6-SCHM

DRAWING #: 1H26958
PAGE 2 OF 2

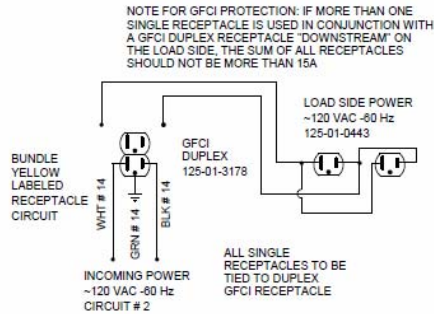




HUSSMANN® Hussmann Corporation, Intl. 13770 Ramona Avenue Chino, CA 91710 (909) 590-4910 Lic # 644406	REVISIONS:		DRAWN BY: JESSE RIOS		PROJECT TITLE: SHVS	DRAWING #: 1H18057	
	#:	DESCRIPTION:	DATE:	BY:	CHECKED BY:	DATE: 12/12/08	
					PRODUCTION ORDER #:	DRAWING TITLE:	
					FILE LOCATION:	SHVS-8-RLM	
						PAGE 2 OF 4	

CIRCUIT #2	
LOADING	
120 V	
L1	15.0

NOTE: CASE MUST BE GROUNDED



HUSSMANN®
Hussmann Corporation, Intl.
13770 Ramona Avenue
Chino, CA 91710
(909) 590-4910 LC# 644406

REVISIONS:

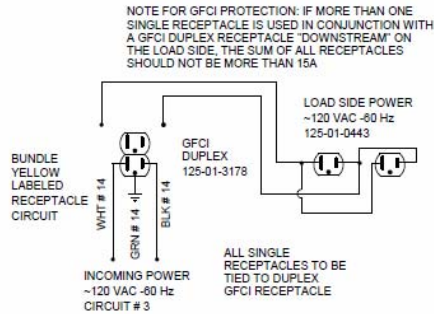
#	DESCRIPTION:	DATE:	BY:

DRAWN BY: JESSE RIOS	PROJECT TITLE: SHVS
CHECKED BY:	DATE: 12/12/08
PRODUCTION ORDER #:	DRAWING TITLE: SHVS-8-RLM
FILE LOCATION:	

DRAWING #:	1H18057
PAGE 3 OF 4	

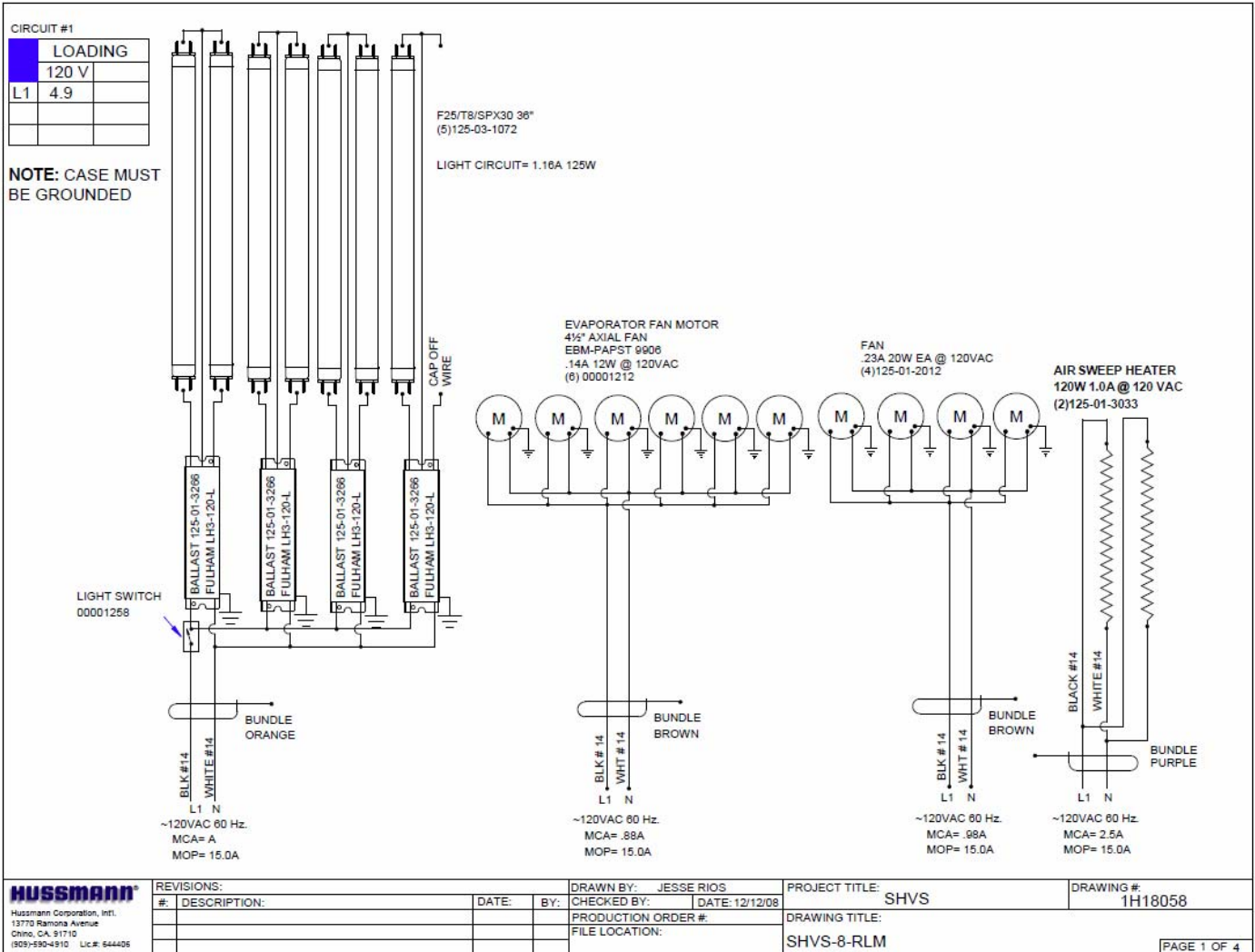
CIRCUIT #3	
LOADING	
120 V	
L1	15.0

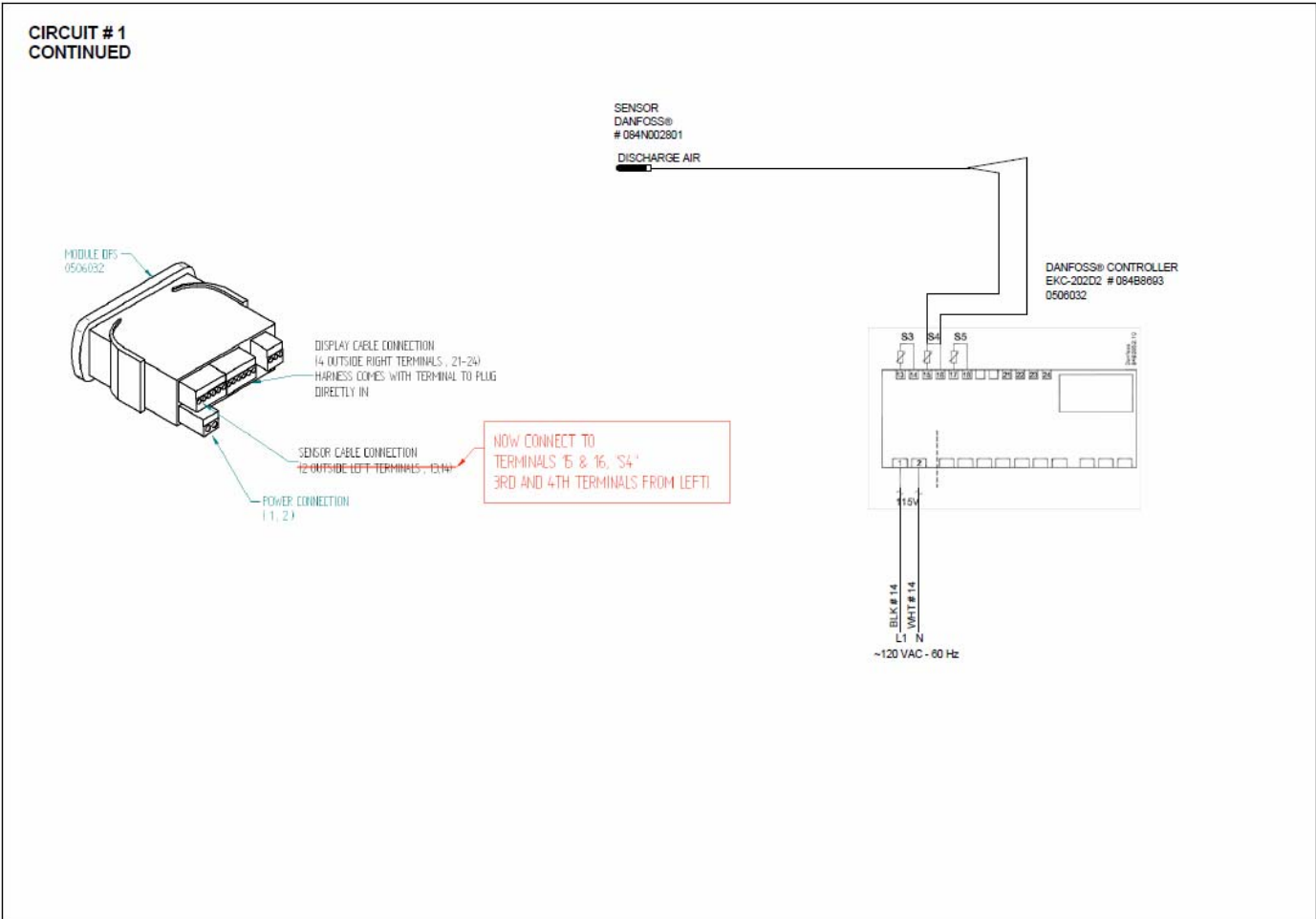
NOTE: CASE MUST BE GROUNDED



HUSSMANN®
Hussmann Corporation, Intl.
13770 Ramona Avenue
Chino, CA 91710
(909) 590-4910 LC# 644406

REVISIONS:				DRAWN BY: JESSE RIOS	PROJECT TITLE: SHVS	DRAWING #: 1H18057
#:	DESCRIPTION:	DATE:	BY:	CHECKED BY:	DATE: 12/12/08	
				PRODUCTION ORDER #:		DRAWING TITLE:
				FILE LOCATION:		SHVS-8-RLM

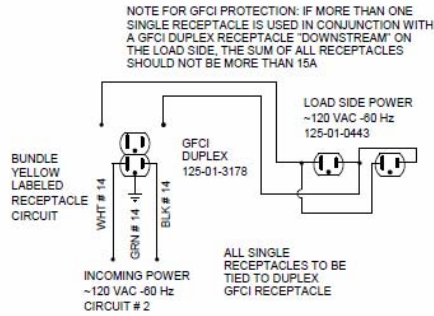




HUSSMANN® Hussmann Corporation, Intl. 13770 Ramona Avenue Chino, CA 91710 (909) 930-4910 Lic # 644406	REVISIONS: # DESCRIPTION DATE BY			DRAWN BY: JESSE RIOS CHECKED BY: DATE: 12/12/08	PROJECT TITLE: SHVS	DRAWING #: 1H18058
				PRODUCTION ORDER #: FILE LOCATION:	DRAWING TITLE: SHVS-8-RLM	
						PAGE 2 OF 4

CIRCUIT #2	
LOADING	
120 V	
L1	15.0

NOTE: CASE MUST BE GROUNDED

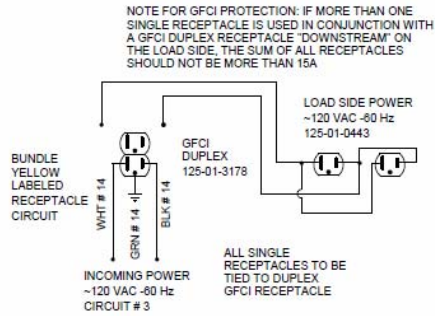


HUSSMANN®
Hussmann Corporation, Intl.
13770 Ramona Avenue
Chino, CA 91710
(909) 590-4910 LC# 644406

REVISIONS:				DRAWN BY: JESSE RIOS	PROJECT TITLE: SHVS	DRAWING #: 1H18058
#:	DESCRIPTION:	DATE:	BY:	CHECKED BY: DATE: 12/12/08	DRAWING TITLE:	
				PRODUCTION ORDER #:	SHVS-8-RLM	
				FILE LOCATION:		PAGE 3 OF 4

CIRCUIT #3	
LOADING	
120 V	
L1 15.0	

NOTE: CASE MUST BE GROUNDED

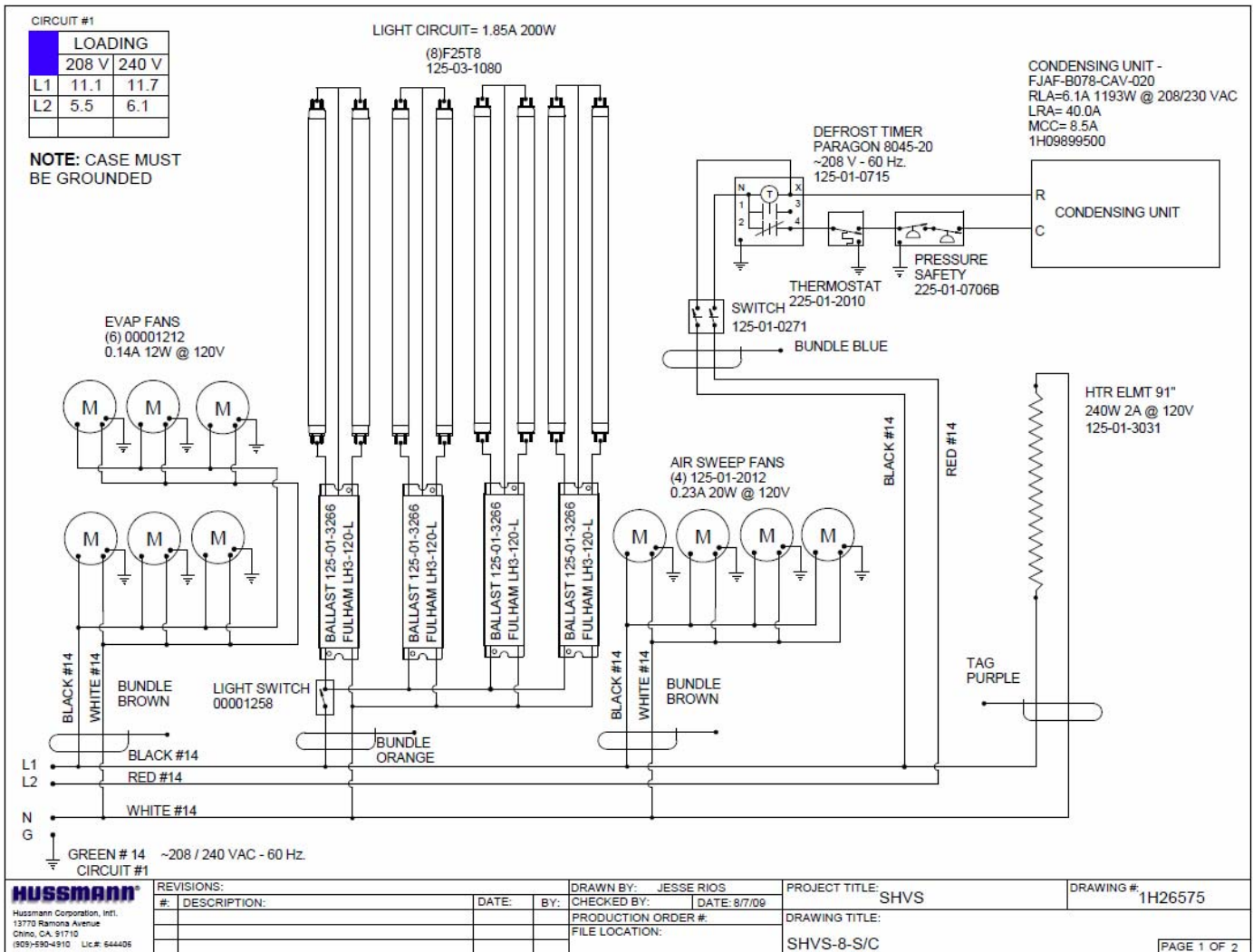


HUSSMANN®
Hussmann Corporation, Intl.
13770 Ramona Avenue
Chino, CA 91710
(909) 590-4910 LC# 644406

REVISIONS:

#	DESCRIPTION:	DATE:	BY:

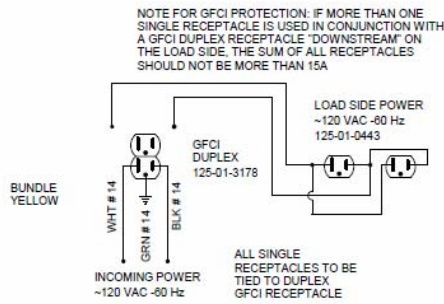
DRAWN BY: JESSE RIOS	PROJECT TITLE: SHVS
CHECKED BY: DATE: 12/12/08	DRAWING #: 1H18058
PRODUCTION ORDER #:	DRAWING TITLE: SHVS-8-RLM
FILE LOCATION:	PAGE 4 OF 4



CIRCUIT #2

LOADING	
	120 V
L1	15.0

NOTE: CASE MUST BE GROUNDED



HUSSMANN®
Hussmann Corporation, Intl.
13770 Ramona Avenue
Chino, CA 91710
(909) 590-4910 Lic.# 644406

REVISIONS:

#	DESCRIPTION:	DATE:	BY:

DRAWN BY: JESSE RIOS
CHECKED BY: DATE: 8/7/09
PRODUCTION ORDER #:
FILE LOCATION:

PROJECT TITLE: SHVS

DRAWING #: 1H26575

DRAWING TITLE:
SHVS-8-S/C

PAGE 2 OF 2