

HUSSMANN®

C2X-X

IMPACT EXCEL

Multi-Deck Convertible Merchandiser for All Medium Temperature Applications



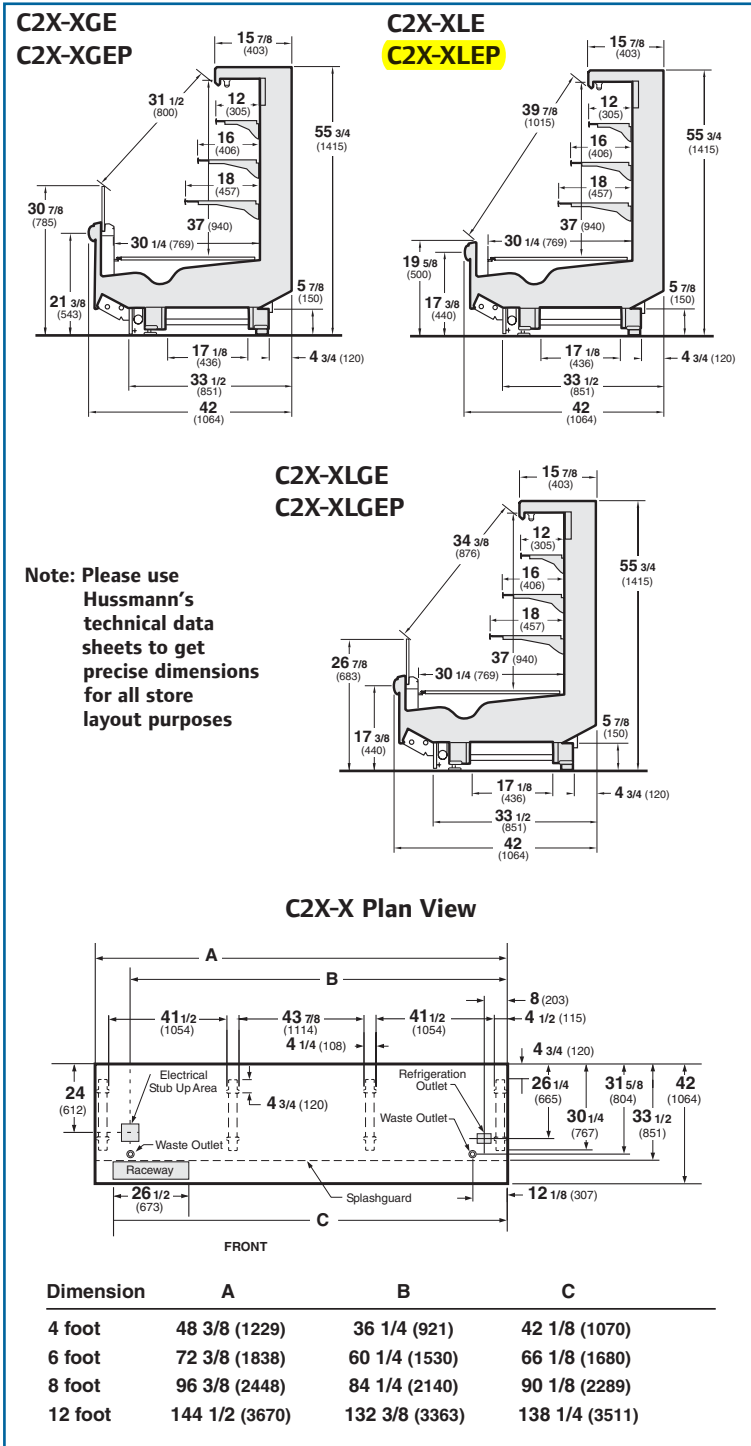
Extra-Height C2X-X Multi-Deck Convertible Merchandiser

Extra-Height (55 3/4") Models Available

C2X-XGE C2X-XGEP C2X-XLGE
 C2X-XLE C2X-XLEP C2X-XLGEP
 E=Energy Efficient Coil EP=E Plus, Extra High Efficiency Coil
 L=Low Front G=Glass Front

HUSSMANN®
Impact Excel

Available in 4', 6', 8' & 12' lengths.



Superior Merchandising

The C2X-X family (55 3/4" tall) provides about 7 additional inches of height compared to the C2X (48 1/2" tall) for additional merchandising capacity. Ideal for grab-n-go meals or other high margin prepared food selections such as sandwiches, prepared salads, pizza, etc.

Lower Energy Costs

All Impact Excel C2X-X cases come with energy efficient "E" coils as standard. Super efficient E-Plus coils are optionally available.

Superior Shelf Life

Modular coils and off-time defrost work to reduce thermal shock and stabilize product temperatures, resulting in better freshness and longer shelf life. Modular defrost, optional, can further stabilize temperatures.

Lower Labor Costs

Labor saving features include greater clearance under the case, easy-to-clean bathtub bottom with no coil in the bottom of the case, adjustable feet, easier raceway access, 2' honeycomb sections and more.

Superior Reliability

Our 5 year modular coil warranty is the best available. Pre-set expansion valves are designed to hold optimal temperatures throughout the life of the case.

Note: These merchandisers are designed for use in stores when temperature and humidity do not exceed 75°F and 55% RH.

Note: We reserve the right to change or revise specifications and product design in connection with any feature of our products. Such changes do not entitle the buyer to corresponding changes, improvements, additions or replacements for equipment previously sold or shipped.

IR Ingersoll Rand
 Climate Control Technologies

Hussmann Corporation
 12999 St. Charles Rock Rd.
 Bridgeton, MO 63044-2483
 (314) 291-2000
 (314) 298-4756 Fax